

**Shubhashanna Kul College of Education**  
Madhukarnagar – Patas, Tal – Daund, Dist – Pune.

**B.Ed Second Year .....**

**उपक्रम - १**  
**Block Teaching ( मुल्यमापन योजना)**

अ.नं. Sr.No.	पाठय घटक Unit	शाळेचे नांव School Name	दिनांक Date	इयत्ता Std.	पैकी Out of 100	सही Sing
1						
2						
3						
4						
5						
6						

600



75

मार्गदर्शक प्राध्यापकाची सही  
Sign. Of Group Incharge



*[Signature]*  
**PRINCIPAL**  
SUBHASHANNA KUL COLLEGE OF EDUCATION  
MADHUKARNAGAR-PATAS.  
TAL.DAUND, DIST.PUNE

**Bhima Shaikshanik Nyas**

**Shubhashanna Kul College of Education**  
 Madhukarnagar – Patas, Tal – Daund, Dist – Pune- 412219.

B.Ed Second Year .....


**Evolution Chart**

**Activity 01 Block Teaching/Lesson - 1**

Sr. No.	Step	Criteria	1	2	3	4	5
1	Lesson Note	Neat, Correct & Complete					
2	Introduction	Relevant & Stimulating					
3		Revival of previous knowledge & linking with the topic					
4		Statement of Fluency in Narration					
5	Presentation	Clarity & Fluency in Narration					
6		Questions : Clear, Concise & grammatically Correct					
7		Questions : Logical & thought Provoking					
8		Distribution of Questions & Reinforcement					
9		Black board work					
10		Clarity in Reading/Easy in Demonstration					
11		Explanation : Use of Examples					
12		Master over the Content					
13		Use of Teaching Aids					
14		Student Participation					
15		Teachers Preparedness					
16		Class Room / Time Management					
17	Formative Evaluation	Recapitulation as per objectives					
18		Application – Use of evaluation Tools					
19		Home Work					
20		Overall Impression					
		Total Marks					
						100	



Signature of Professor In - Charge  
**Bhima Shaikshanik Nyas**

  
**PRINCIPAL**  
 SUBHASHANNA KUL COLLEGE OF EDUCATION,  
 MADHUKARNAGAR-PATAS,  
 TAL.DAUND, DIST.PUNE

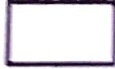
Shubhashanna Kul College of Education  
Madhukarnagar - Patas, Tal - Daund, Dist - Pune.

B.Ed Second Year .....

उपक्रम - २  
Evaluation Plan (मुख्यपत्र योजना)

अ.नं. Sr.No.	दिनांक Date	घटक Content	गुण Mark	वैकी Out of	सही Sign
1		घटक नियोजन अ + ब Unit Plane A+B		100	
2		घटक चाचणी अ + ब Unit Test A + B		200	
3		उत्तरसुची संविधान तक्ता गुणदान योजना अ + ब Blue Print Marks A+B		100	
				400	

500



25

वार्षिक पाठ्यावकाची सही  
Sign. Of Group Incharge

PRINCIPAL  
SHUBHASHANNA KUL COLLEGE OF EDUCATION  
MADHUKARNAGAR-PATAS,  
TAL DAUND, DIST PUNE



Bhima Shaikshanik Nyas

**Shubhashanna Kul College of Education**  
**Madhukarnagar – Patas, Tal – Daund, Dist – Pune- 412219.**

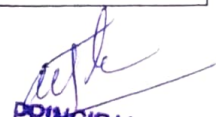
**B.Ed Second Year .....**

**Evolution Chart**  
**Activity 02 (A)**  
**Unit Plan**

Sr. No.	Step	Criteria	1	2	3	4	5	
1	Preparation of Unit Plan	Selection Unit & its division in to Students with proper teaching & learning management						
2		Aims & objectives of unit Plan proper content analysis in unit plan						
3		Sequencing the content with suitable learning experiences						
4		Time Management Unit Plan note : Neat, correct, complete						
5		Selection of teaching methods for each subunit						
6		Use of various Types of questions in unit plan						
7		Suitable learning experience with suitable examples & Relevant Teaching aids						
8		Use of ICT Component						
9		Student Teacher interaction						
10		Inclusion of life skill/value/C.E.						
11		Brief revision after delivery each content module						
12		Scope for developing interest						
13		Execution plan in view of Construct visit teaching learning						
14	Formative Evaluation	Use of formative evaluation tools in application						
15		Teachers Preparedness						
16		Home Work						
17	Summative Eval	Unit Teat as per Blue Print						
18		Educational Implication & Overall impression						
19		Educational Implication						
20		Overall Impression						
		Total Marks						
								100



**Signature of Professor In – Charge :-**  
**Bhima Shaikshanik Nyas**

  
**PRINCIPAL**  
 SUBHASHANNA KUL COLLEGE OF EDUCATION  
 MADHUKARNAGAR-PATAS,  
 TAL.DAUND, DIST.PUNE

**Shubhashanna Kul College of Education**  
 Madhukarnagar – Patas, Tal – Daund, Dist – Pune- 412219.

B.Ed Second Year .....

**Evolution Chart**  
**Activity 02 (B)**  
**Development and Conduct of Unit Test**

Sr. No.	Step	Criteria	1	2	3	4	5
1	Development of Test	Proper Instructions given on unit test paper					
2		Weightage give to objectives					
3		Fulfillment of objectives through different types of question					
4		No.of questions and time sufficiency					
5		Weightage give to different types of questions					
6		Inclusion of all types of questions					
7		Proper sequence of questions as per difficulty level					
8		Questions based on specified content					
9		Consideration of content length & importance of subunit					
10		Grammatically Correctness & Clarity of Unit test Paper					
11		Length and validity of the unit test					
12		Adequacy of the unit test					
13		Objectivity of the test					
14		Printing and format of unit test paper					
15	Administration of unit test	Feasibility of the test					
16		Seating arrangement for unit test					
17		Supervision					
18		Time Management					
19		Educational Implication					
20		Overall Impression					
		Total Marks					
			100				



  
 Signature of Professor In - Charge  
**Bhima Shaikshanik Nyas**

**PRINCIPAL**  
 SUBHASHANNA KUL COLLEGE OF EDUCATION  
 MADHUKARNAGAR-PATAS,  
 TAL. DAUND, DIST. PUNE

**Shubhashanna Kul College of Education**  
Madhukarnagar – Patas, Tal – Daund, Dist – Pune- 412219.

B.Ed Second Year .....

**Evolution Chart**

**Activity 02 (C)**

**Developing a Blue Print with Model Answer and Marking Scheme**

Sr. No.	Criteria	1	2	3	4	5
1	Structure of Blue Print as per objective					
2	Structure according to subunits & marks distribution					
3	Structure according to question type					
4	Overall 3 dimensional design correct & complete					
5	Accuracy of Model answers					
6	Model answer as per objectives of the questions					
7	Expected outline of the answer in model answers					
8	Marking scheme according to the scope					
9	Point – wise/sub question wise marking scheme					
10	Overall Impression					
	Total Marks					100

Signature of Professor In - Charge

  
PRINCIPAL

SUBHASHANNA KUL COLLEGE OF EDUCATION  
MADHUKARNAGAR-PATAS  
TAL DAUND DIST PUNE



Bhima Shaikshanik Nyas  
**Shubhashanna Kul College of Education**  
Madhukarnagar – Patas, Tal – Daund, Dist – Pune.

**B.Ed Second Year .....**

**Activity – 3**

**Study of the Records maintained by the School Need of maintaining record**

**उपक्रम – ३**

**( शालेय दप्तर व्यवस्थापन व त्याची गरज यांचा अभ्यास)**

अ.नं. Sr.No.	दिनांक Date	तपशिल Content	सही Sing
1			
2			
3			
4			

500

25

मार्गदर्शक प्राध्यापकाची सही  
Sign. Of Group Incharge

  
PRINCIPAL

SUBHASHANNA KUL COLLEGE OF EDUCATION  
MADHUKARNAGAR-PATAS,  
TAL.DAUND, DIST.PUNE

Bhima Shaikshanik Nyas




**Shubhashanna Kul College of Education**  
**Madhukarnagar – Patas, Tal – Daund, Dist – Pune- 412219.**

**B.Ed Second Year .....**

**Evaluation Chart**  
**Activity 03**  
**Study of records mentioned by schools**

Sr. No.	Criteria	1	2	3	4	5
1	Introduction need & importance					
2	Objectives of activity					
3	Record I					
4	Title, Format, Style of maintaining the record					
5	Nature & Scope of the record					
6	Related to student/teacher/Go/NGO/ Mother/Institute/Other					
7	Opinion about record I					
8	Record II					
9	Title, Format, Style of maintaining the record					
10	Nature & Scope of the record					
11	Related to student/teacher/Go/NGO/ Mother/Institute/Other					
12	Opinion about record II					
13	Record III					
14	Title, Format, Style of maintaining the record					
15	Nature & Scope of the record					
16	Related to student/teacher/Go/NGO/ Mother/Institute/Other					
17	Opinion about record III					
18	Record IV					
19	Title, Format, Style of maintaining the record					
20	Nature & Scope of the record					
21	Related to student/teacher/Go/NGO/ Mother/Institute/Other					
22	Opinion about record IV					
23	Educational Implication					
24	Overall Impression					
	Total Marks					
		100				



  
**Signature of Professor In - Charge**  
**PRINCIPAL**  
 SUBHASHANNA KUL COLLEGE OF EDUCATION  
 MADHUKARNAGAR-PATAS  
 TAL.DAUND, DIST.PUNE



Bhima Shaikshanik Nyas  
**Shubhashanna Kul College of Education**  
Madhukarnagar – Patas, Tal – Daund, Dist – Pune.

**B.Ed Second Year .....**

**Activity – 4**  
**Co-Curricular & Extra-curricular activities**

**उपक्रम – ४**  
**( अभ्यासपूरक व अभ्यासेत्तर उपक्रम)**

अ.नं. Sr.No.	दिनांक Date	उपक्रम Activity	गुण Mark	सही Sing
1				
2				

500

25

मार्गदर्शक प्राध्यापकाची सही  
Sign. Of Group Incharge



PRINCIPAL

SUBHASHANNA KUL COLLEGE OF EDUCATION  
MADHUKARNAGAR-PATAS,  
TAL DAUND, DIST. PUNE



Bhima ShaikshaniK Nyas  
**Shubhashanna Kul College of Education**  
Madhukarnagar – Patas, Tal – Daund, Dist – Pune.

**B.Ed Second Year .....**

**Teaching Competency – IV**

**Course Code 207**

**Student Name :- .....**

No.	Name of Activity	Total Marks	Out of
A	Less	<u>        </u> 600	<u>        </u> 75
B	Plan of Evaluation Model Answer 1. Unit Plan 2. Unit Test 3. Unit Test	<u>        </u> 400	<u>        </u> 25
C	Study of Records (Records School 1,2,3,4)	<u>        </u> 100	<u>        </u> 25
D	Co-Curricular & Extra Curricular	<u>        </u> 100	<u>        </u> 25
E	Observation of Peers	<u>        </u> 600	<u>        </u> 25
F	Other School Activity	<u>        </u> 50	<u>        </u> 25

Signature of Group – In charge

PRINCIPAL

SUBHASHANNA KUL COLLEGE OF EDUCATION  
MADHUKARNAGAR-PATAS,  
TAL. DAUND, DIST. PUNE  
Bhima ShaikshaniK Nyas

Total =  200



Bhima Shaikshanik Nyas  
**Shubhashanna Kul College of Education**  
Madhukarnagar – Patas, Tal – Daund, Dist – Pune- 412219.

B.Ed Second Year .....

**Evolution Chart**  
**Activity 04**  
**Organization of Co-Curricular/extracurricular activities**

Sr. No.	Criteria	1	2	3	4	5
1	Selection & Planning of Co-Curricular Activity					
2	Preparation of student teacher for co & extra activities					
3	Organization of co-curricular Activity					
4	Participatory role of student teacher in the activity					
5	Co-Ordination between student teacher & school staff					
6	Management or opportunities given to the student					
7	Encouragement or opportunities given to the students					
8	Student response & scope for other skill development					
9	Problem faced during activates or its overcoming strategies					
10	Educational implication or Overall Impression					
	Total Marks	100				

Signature of Professor In - Charge



**PRINCIPAL**  
SUBHASHANNA KUL COLLEGE OF EDUCATION  
MADHUKARNAGAR-PATAS,  
TAL. DAUND, DIST. PUNE



**Bhima Shaikshanik Nyas**

# Shubhashanna Kul College of Education

Madhukarnagar – Patas, Tal – Daund, Dist – Pune.

B.Ed Second Year .....

## Activity – 5 Observation of Peers

उपक्रम - ५  
गटनिरीक्षण

अ.नं. Sr.No.	दिनांक Date	उपक्रम Activity	गुण Mark	सही Sing
1				
2				
3				
4				
5				
6				

600

25



*[Signature]*  
PRINCIPAL  
SHUBHASHANNA KUL COLLEGE OF EDUCATION  
MADHUKARNAGAR, PATAS,  
TAL. DAUND, DIST. PUNE

मार्गदर्शक प्राध्यापकाची सही  
Sign. Of Group Incharge

**Shubhashanna Kul College of Education**  
 Madhukarnagar – Patas, Tal – Daund, Dist – Pune- 412219.

B.Ed Second Year .....

**Evaluation Chart**  
**Activity 05**  
**Observation of Paper**

Sr. No.	Steps	Criteria	Criteria				
			1	2	3	4	5
1	Introduction	Previous Knowledge					
2		Curiosity arousing/Motivating attractive					
3		Statement of Aim					
4	Presentation	Use of illustration, clarity of thought					
5		Use of teaching aide & demonstration					
6		Classroom interactions					
7		Participation of students interest created					
8		Mastery over the content					
9		Blackboard work					
10		Students response					
11		Reinforcement					
12	Evaluation	Types of questions					
13		Types of application Questions					
14		Homework / Assignment					
15		Class – Control					
16	Record IV	Time Management					
17		Lesson Details					
18		Feed Back					
19		Remarks as per check list					
20		Neat & complete Lesson note					
		Total Marks					
			100				



  
 Signature of Professor In - Charge  
 PRINCIPAL  
 SHUBHASHANNA KUL COLLEGE OF EDUCATION  
 MADHUKARNAGAR-PATAS,  
 TAL. DAUND, DIST. PUNE

Bhima Shalkshanik Nyas  
**Shubhashanna Kul College of Education**  
Madhukarnagar – Patas, Tal – Daund, Dist – Pune.

B.Ed Second Year .....

**Activity – 6**  
**Observation of Peers**

उपक्रम – ६

शालाबाह्य उपक्रम


अ.नं. Sr.No.	दिनांक Date	घटक Content	गुण Mark	सही Sing
1				
2				

50

25

मार्गदर्शक प्राध्यापकाची सही  
Sign. Of Group Incharge



  
PRINCIPAL  
SHUBHASHANNA KUL COLLEGE OF EDUCATION  
MADHUKARNAGAR-PATAS,  
TAL. DAUND DIST. PUNE

Bhima Shaikshaniik Nyas  
**Shubhashanna Kul College of Education**  
Madhukarnagar – Patas, Tal – Daund, Dist – Pune- 412219.


**B.Ed Second Year .....**

**Evolution Chart**  
**Activity 06**  
**Other School Activity**

Sr. No.	Criteria	1	2	3	4	5
1	Nature & relevance of activity					
2	Objectives					
3	Need & Importance					
4	Planning and Implementation					
5	Resources used or prepared					
6	Generation of fund/management of expenses					
7	Social Contribution					
8	Parameters of Success					
9	Parameters of Success					
10	Overall Impression					
	Total Marks					
		100				

**Signature of Professor In - Charge**



  
**PRINCIPAL**  
SUBHASHANNA KUL COLLEGE OF EDUCATION  
MADHUKARNAGAR-PATAS,  
TAL DAUND, DIST. PUNE



*[Handwritten signature]*

PRINCIPAL  
SRIHARISHANNA KUL COLLEGE OF EDUCATION  
NAGHRIKARNAGAR-PATAS,  
DULDAUND.DIST.PUNE





*[Handwritten Signature]*  
PRINCIPAL  
SUBHASHANNA KUL COLLEGE OF EDUCATION  
MAHARAJGARH-PATAS  
DALUHO, DIST. PUNE



*[Signature]*  
**PRINCIPAL**  
SARASWATI KUL COLLEGE OF EDUCATION  
MANGAL KARNAGAR-PATAS,  
THE DAUND, DIST. PUNE



Digitized by Srujanika@gmail.com



PRINCIPAL  
MADRAS UNIVERSITY COLLEGE OF EDUCATION  
MADRAS UNIVERSITY CAMPUS  
MADRAS DISTRICT



MAHARAJA KAMARAJU COLLEGE OF EDUCATION

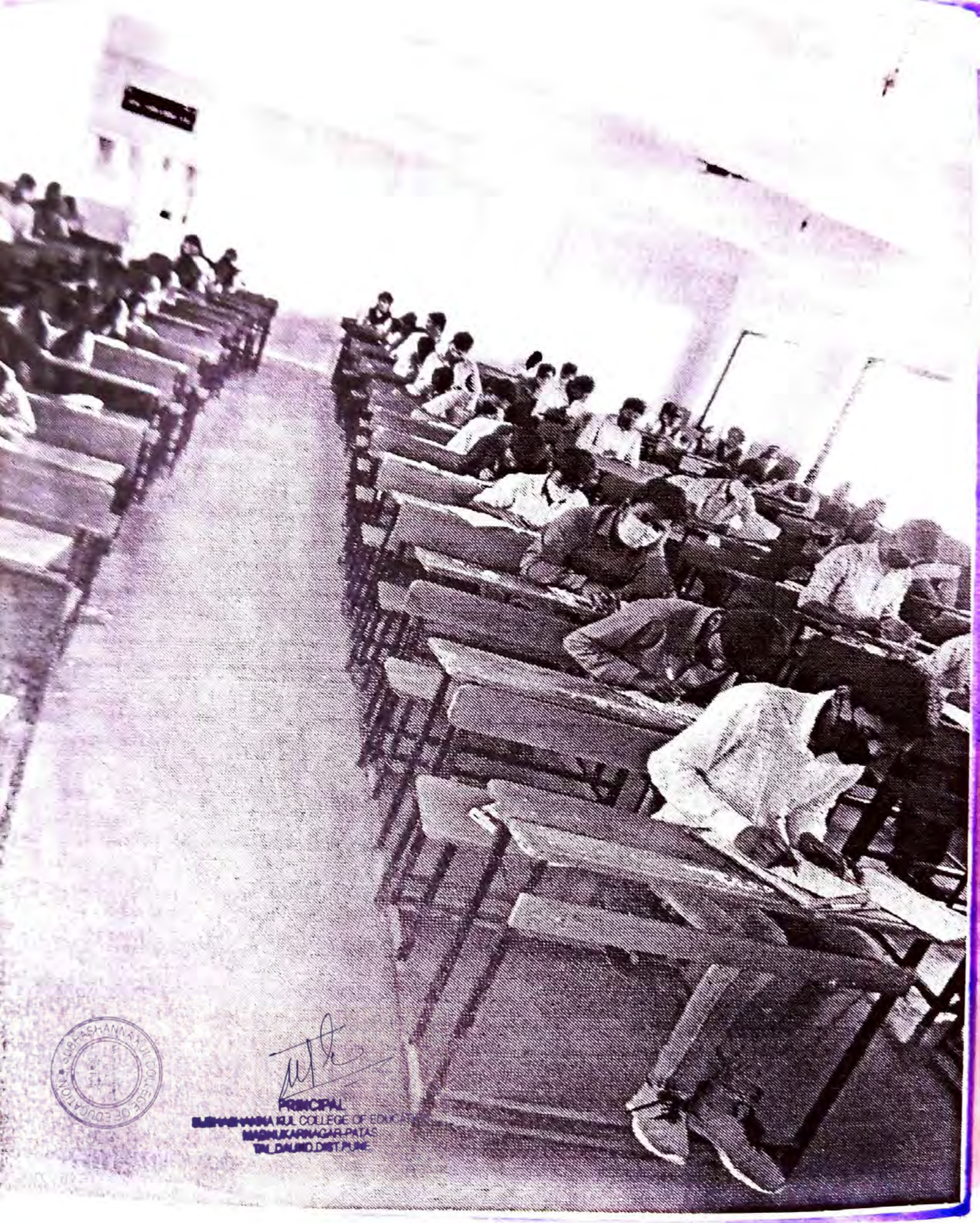


PRINCIPAL  
MAHARAJA KAMARAJU COLLEGE OF EDUCATION  
MAHARAJA KAMARAJU PATA  
DOLASANDHUR, PUNE



*[Handwritten signature]*

**PRINCIPAL**  
**SUBHASHANNA KUL COLLEGE OF EDUCATION**  
**MASHUKARNAGAR-PATAS,**  
**TAL. DALMI, DIST. PUNE**



*[Handwritten Signature]*

PRINCIPAL

SREEBHAWAN'S COLLEGE OF EDUCATION  
MADHUKARNAGAR, PATAS  
TAL. DALGA, DIST. PUNE